



The Leading UK
Manufacturer of
Vertical Form Fill
and Seal Packaging
Solutions.

UK Manufacturing
Since 1984

GIC3000

Vertical Form Fill Seal Bagging Machine

Machine Information

Overview

The **GIC3000** is ideal for high speed bag styles upto 250mm wide, such as pillow gusseted and block bottom. The machine can also be manufactured to accomodate carry bag handle applications.

Applications

The **GIC3000** can package a wide variety of products including fresh produce, snacks, confectionery, industrial, pulses and powders, pasta, liquids.

Integration

The **GIC3000** integrates seamlessly with various upstream equipment such as check-weighers, multi-head weighers, augers, pumps, cup fillers and counters. The **GIC8000** also integrates with all downstream equipment.

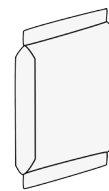
Leading Technology

The **GIC3000** incorporates robust proven mechanical design with latest Allen Bradley servo drives. The result is industry leading reliability and low cost of ownership.

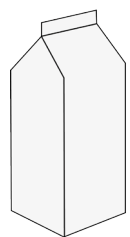
Pack Fortmats



Pillow



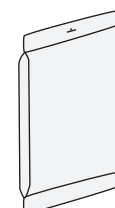
Gusseted



Block Bottom



Carry Bag
Handle



Euroslot

* Model shown with optional stainless steel doors

GIC3000

Vertical Form Fill Seal Bagging Machine

Standard Features...

- 10 inch Operator friendly HMI colour touch screen with multi access facility
- Full latest specification Allen Bradley Servo Drives
- Enclosed main frame and sealed panel
- Stainless steel and hard anodised aluminium finish
- Low Level Drop on air shaft and powered unwind
- Film Splice
- Toolless size change facility
- Reel run out detection
- Fully integrated coder station
- Product in seal detection
- Heat Seal Crimp Jaws with out of tolerance temperature sensor
- Film Transport with individual drives
- Upto 200 product codes available



Allen Bradley Control System as Standard



Low Level Cantilevered Film Reel Shaft

Optional Features...

- Full stainless steel construction
- Polyethylene sealing system (impulse welding)
- Gas flushing
- Static eliminator
- Bag shaker
- Deflator unit
- Discharge pack elevator
- Remote access for diagnostics and software upgrades
- Overprinter
- Adjustable pack turning device
- Label application
- Print registration unit
- Carry bag handle application

Specification

Weight: 1000kg

Maximum Pack Sizes: 250mm Wide x 500mm Long

Maximum Speed: 150 packs per min

Power Supply: 415V 3-phase 3kW (4kW for servo option)

Compressed Air:

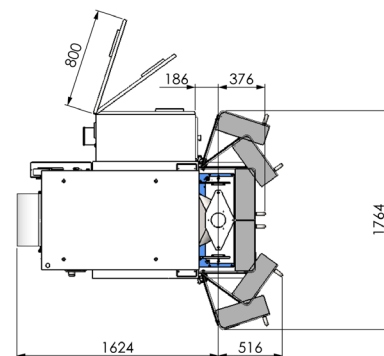
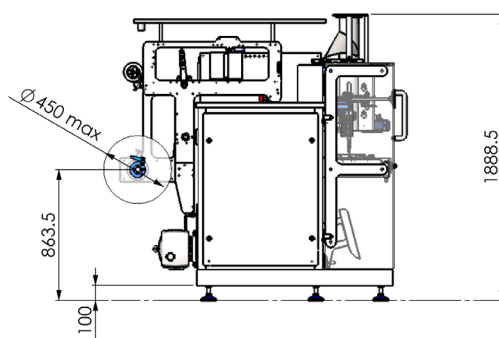
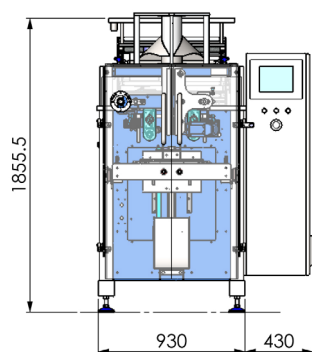
Free air – 0.06 cubic mtrs/min dependent on speed and application.

Finish: Stainless steel and anodised aluminium

Packaging Materials: All suitable heat sealable materials

including laminates and polyethylenes (optional impulse sealing).

Technical Diagrams - GIC3000 (model shown with right hand HMI)



GIC Ltd, Alpha Works, Sandars Road, Heapham Road Industrial Estate, Gainsborough, Lincolnshire, DN21 1RZ

Tel: +44 (0)1427 611885 | Email: info@gic.uk.net | Web: www.gic.uk.net

For all enquiries in the North of England, Scotland and Ireland call Martin Raison on : 07710 714267

For all enquiries in the South of England & Wales call Keith Marrow on : 07872 129272