



The Leading UK Manufacturer of Vertical Form Fill and Seal Packaging Solutions.

UK Manufacturing
Since 1984



GIC5000

Vertical Form Fill Seal Bagging Machine

Machine Information

Overview

The **GIC5000** is ideal for high speed bag styles upto 580mm wide, such as pillow gusseted and block bottom. The machine can also be manufactured to accomodate carry bag handle applications.

Applications

The **GIC5000** can package a wide variety of products including Industrial Hardware, Pulses & Powders, Pet Foods, Aggregates | Fertilizers

Feed System Options

Augers | Linear weighers | Multi-head weighers | Counters | Volumetric fillers | Liquid pumps | Bucket elevators

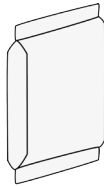
Leading Technology

The **GIC5000** incorporates robust proven mechanical design with latest Allen Bradley servo drives. The result is industry leading reliability and low cost of ownership.

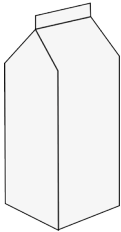
Pack Fortmats



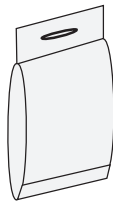
Pillow



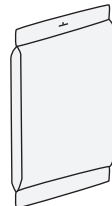
Gusseted



Block Bottom



Carry Bag Handle



Euroslot

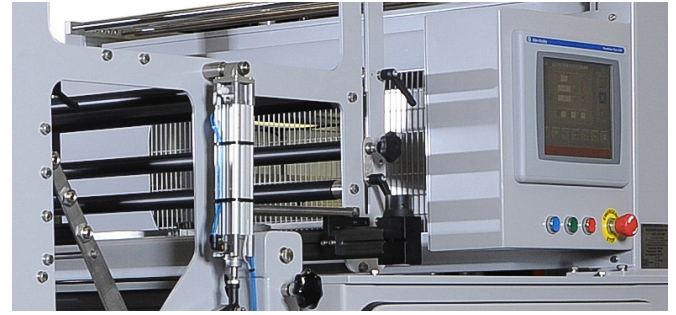
*Model shown with left hand HMI screen

GIC5000

Vertical Form Fill Seal Bagging Machine

Standard Features...

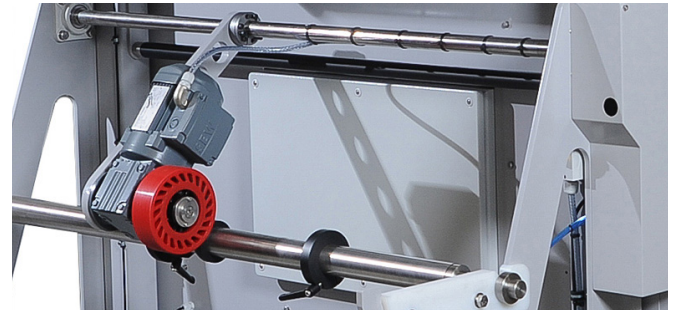
- Inverter controlled twin belt transport system
- Pneumatically operated horizontal seal jaws
- PLC Control system
- Horizontal jaw obstruction detector
- Touch-screen operator interface
- Reel run out Sensor
- Mild Steel powder coat finish
- Hand-wheel Adjustment for quick tracking of wrapping material
- Powered unwind



Full Allen Bradley Servo Drive Specification

Optional Features...

- Servo motor driven transport and horizontal sealing jaws
- Stainless steel and hard anodised aluminium construction
- Polyethylene sealing system (impulse welding)
- Gas flushing
- Static eliminator
- Bag shaker
- Deflator unit
- Finish bag take-away elevator
- Overprinter
- Selectable multi-pull transport cycles
- Adjustable pack support
- Print Registration unit
- Heat Seal



Large Capacity Powered Film Unwind

Specification

Weight: 2200kg

Maximum Pack Sizes: 580mm Wide x 1000mm Long

Maximum Speed: 30 packs per min

Power Supply: 415V 3-phase 3kW (4kW for servo option)

Compressed Air: Free air – 0.27 cubic mtrs/min (0.06 cubic mtrs/min for servo option) dependent on speed and application.

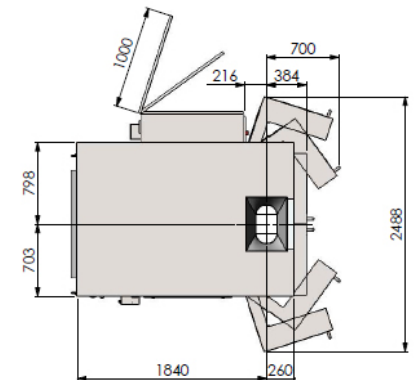
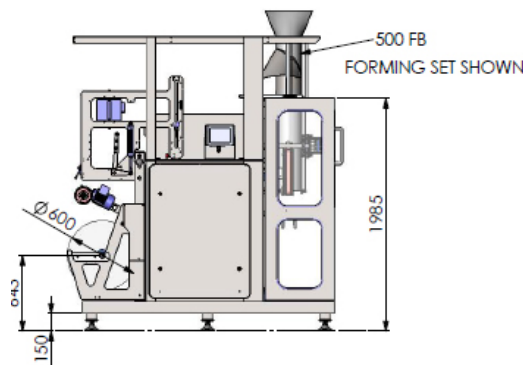
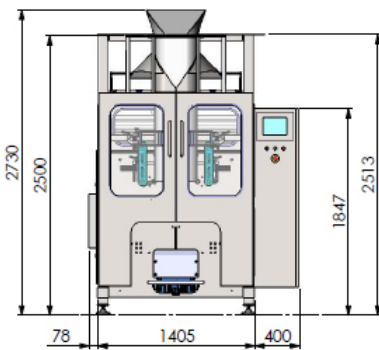
Finish: Powder Coated Mild Steel

Packaging Materials: All suitable heat sealable materials including laminates and polyethylenes

Max Reel Outer Diameter: 600mm (max reel weight 200kg)

Reel Core Diameter: 76mm

Technical Diagrams - GIC5000 (model shown with right hand HMI)



GIC Ltd, Alpha Works, Sandars Road, Heapham Road Industrial Estate, Gainsborough, Lincolnshire, DN21 1RZ

Tel: +44 (0)1427 611885 | Email: info@gic.uk.net | Web: www.gic.uk.net

For all enquiries in the North of England, Scotland and Ireland call Martin Raison on : 07710 714267
For all enquires in the South of England & Wales call Keith Marrow on : 07872 129272